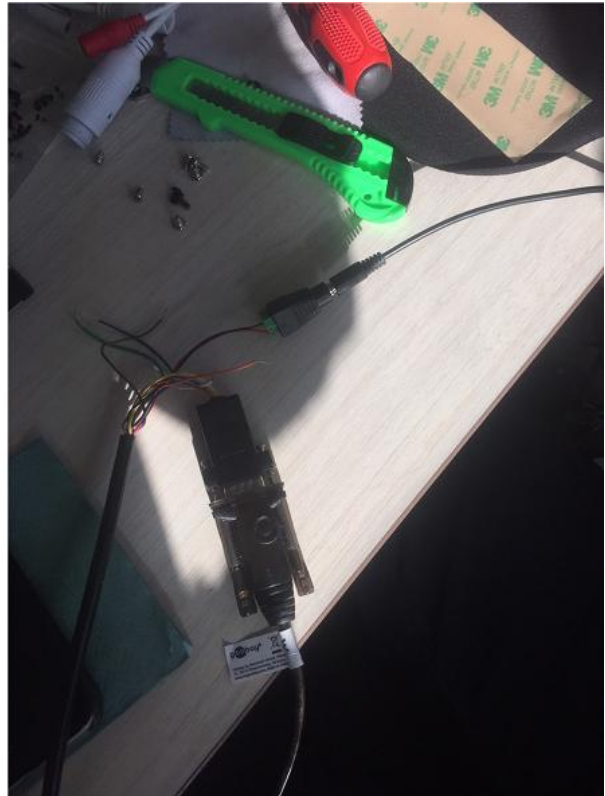


KRATKO UPUTSTVO ZA UNOS KORISNIKA U MEMORIJU KONTROLERA





Kako povezati COM-to-USB interfejs između kontrolera i vašeg PC-a

RFID Reader Demo - [Ver:3.3.0.0]

CONNECT() LANGUAGE HELP() **3. Click**

CHOOSE INTERFACE **1**

SERIAL INTERFACE NET INTERFACE USB INTERFACE **1. Click**

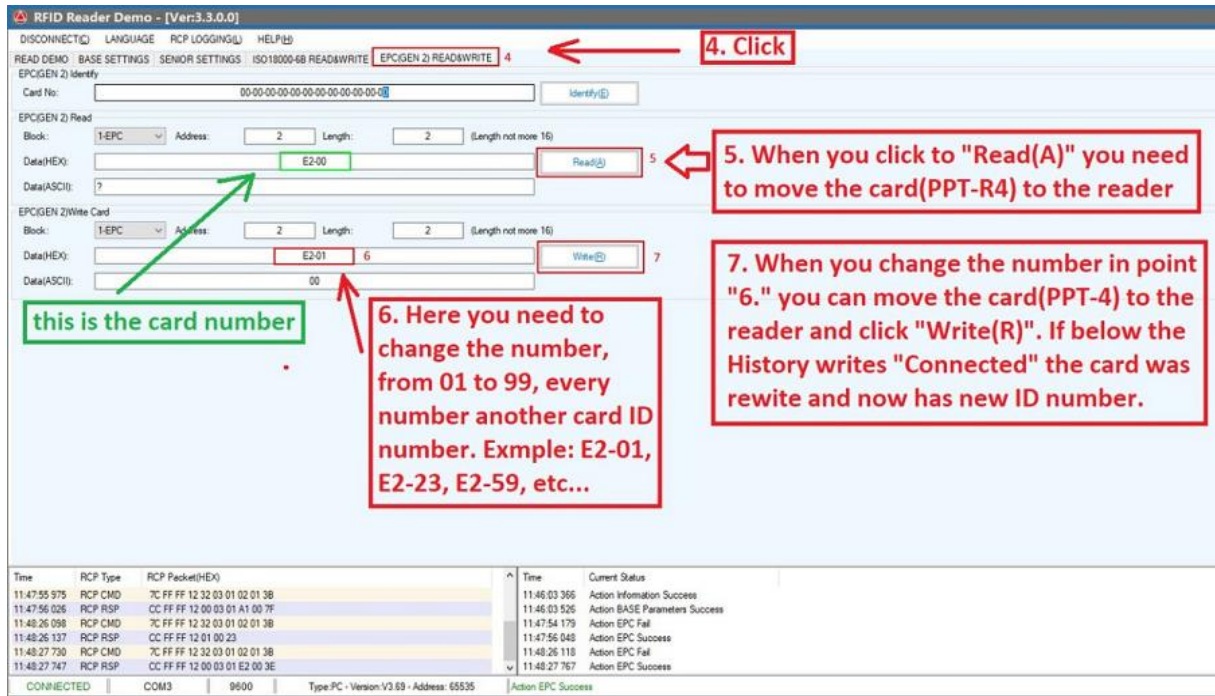
SERIAL INTERFACE

PortName COM3 BaudRate **2** 9600 Auto Switch **2. Choose**

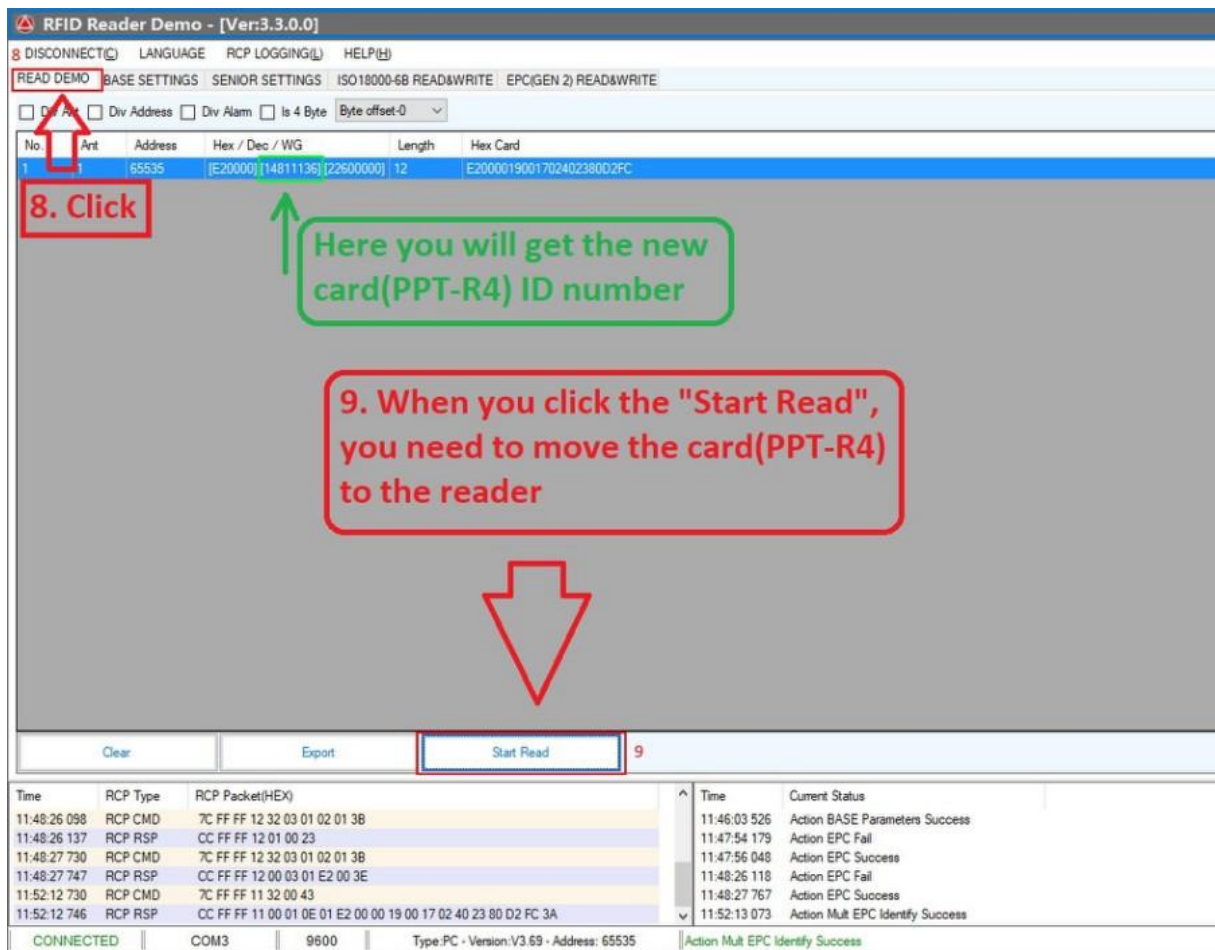
[ATTENTIONS]

1. Any problem of reader, please restore the factory settings [CONNECT--BASE SETTINGS--Default All--Set Para];
2. When connect the reader and get or set parameters, keep the reader silent (to prevent data conflicts);
3. Confirm the reader how to connect pc:
Use RS232 or RS485, Please choose the serial interface, and fill in the correct serial port and baudrate.
Use Lan or WIFI, Please choose the net interface, and fill in the correct ip address and ip port.
(This software is only applicable to the reader to do server communications)
Use USB, Please choose the usb interface. (Virtual serial port exception)
4. When the reader is connected to the controller through the weigand interface or syris485 interface, if the controller shows the same card number, please adjust the "Byte Offset" value:
WG26 usually set 9 or 5; WG34 usually set 8 or 4; Syris485 usually set 8 or 4;
5. EPC Number(Hex card): 01-02-03-04-05-06-07-08-09-10-11-12
Byte Offset=0, WG26 card number ="01-02-03", WG34 card number ="01-02-03-04";
Byte Offset=4, WG26 card number ="05-06-07", WG34 card number ="05-06-07-08";

Izbor režima u kojem će kontroler komunicirati sa vašim PC



Izmena postojećih RFID kartica/tagova u memoriji kontrolera



Unos novih RFID kartica/tagova u memoriju kontrolera